

## GETTING STARTED

### Log On

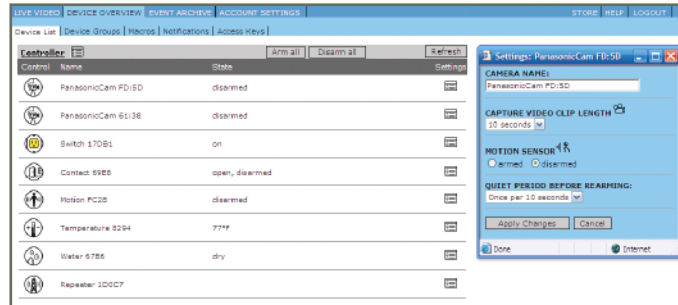
Using the browser on your computer (Internet Explorer, Firefox, or Netscape), go to <http://xanboo.com/ss>. Enter your **UserID** and **Password** in the proper fields and log in to your remote account.

Home Monitoring User ID:	Password:	<input type="button" value="go"/>
<input type="text"/>	<input type="password"/>	
<a href="#">new_customer? register now!</a>	<a href="#">forgot password?</a>	

## FEATURE 1

### Device Overview - Device List

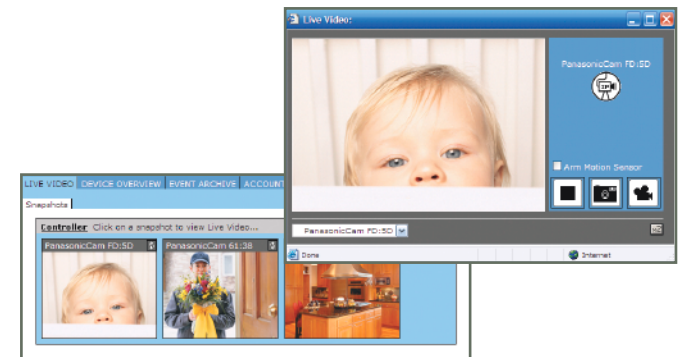
Control all devices: Arm, Disarm, Edit Settings and reach our Help screen. You can even purchase devices from our **Online Store!**



## FEATURE 2

### Live Video

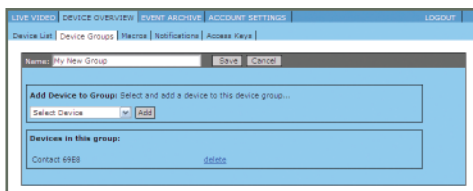
Click '**LIVE VIDEO**' tab and then camera snapshot to view.



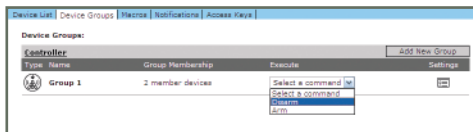
## FEATURE 3

### Device Groups

Have greater control over your devices by organizing them into Groups.



CREATING A DEVICE GROUP

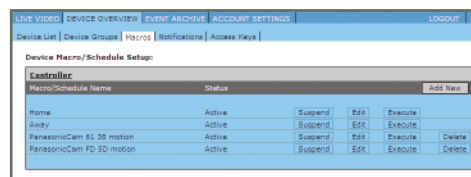


DEVICE GROUP LISTING

## FEATURE 4

### Macros

Configure your system to perform multiple actions from a single sensor trigger. For example, you can set it up so that if a door sensor is triggered your system will capture a video from a camera, turn on a lamp with a power control module, and alert an audio siren. Notifications can also be set through the Macros.

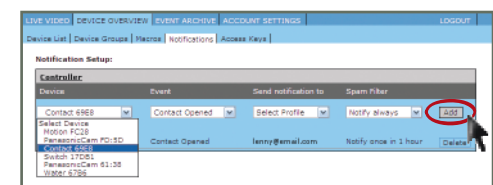


## FEATURE 5

### Notifications

Be alerted anytime, by email or text message, when an action takes place in your home or business.

Simply select a device from the dropdown list. Once the device is selected, choose an event to monitor. Next, select how you wish to be notified (email or text message to your java enabled cell phone) as well as the frequency of the notifications.

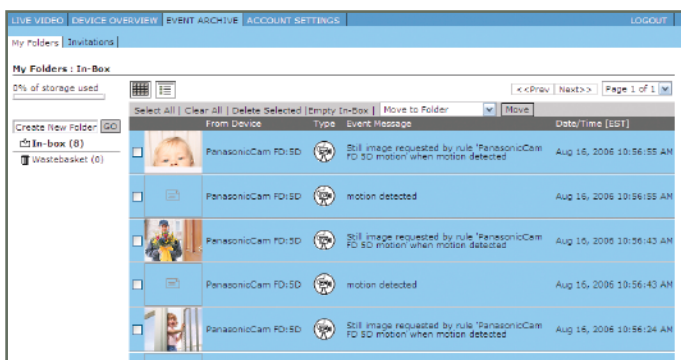


WHEN COMPLETE, SIMPLY CLICK 'ADD'

## FEATURE 6

### Event Archive

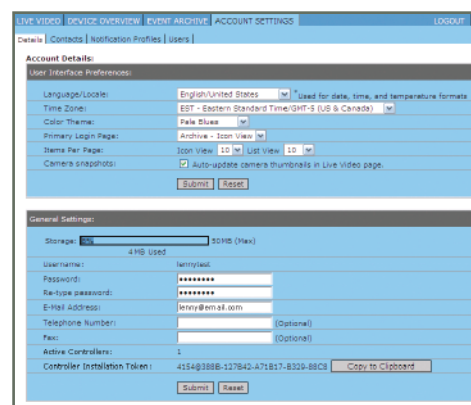
Maintain control over all activities in your account. From the Inbox you can View Images and Saved Video Clips, as well keep track of how much storage space is being used by your account.



## FEATURE 7

### Account Settings

Add the personal touch to your account by adjusting the Settings, change the Color Theme, Time Zone, Login Page View and more!



## FEATURE 8

### Turn Your Mobile Phone into a Window to Your Home!

If you have a JAVA enabled cell phone you can view live video from anywhere. Use your phone's web browser to download the application from <http://xanboo.com/ss/j2me> and enter your remote account **UserID** & **Password**.



## CONGRATULATIONS!

EXPLORE YOUR ACCOUNT! ACCESS LIVE VIDEO, CONTROL & SENSOR ALERTS VIA PC OR CELL PHONE. YOU ARE NOW FULLY ABLE TO BE THERE, EVEN WHEN YOU'RE NOT!

